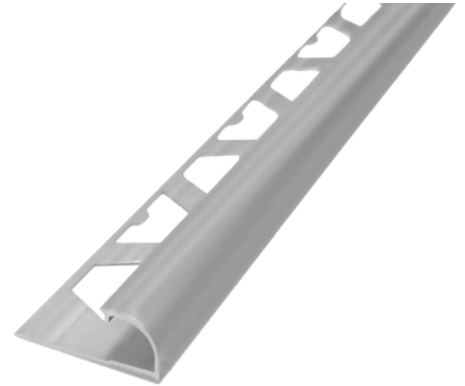


## Description

Profile made of 6063 T5 aluminum allow with prolonged curves design, created to protect the edges of rectified porcelain tiles.

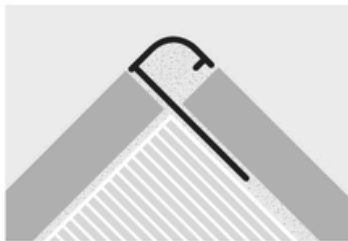
**Dimensions:** 3/8" x 8' 2-1/2"

**SKU Code:** U5383



## Perfil

### USES

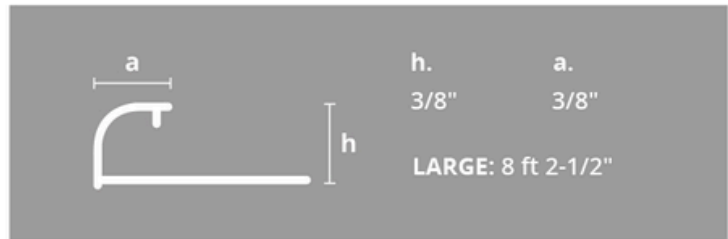


As a corner guard



As a wall corner trim

### PROFILE



## Uses and applications

Allows the joints of two coatings at 90°. Ideal finish for walls, external corners, countertops, and columns.

Uses: Indoor walls.



## Advantages

- In addition to decorating the joint between two planes, it protects coating edges from mechanical impact.
- It can be used as corner post and/or wall finish when the coating does not reach the ceiling.

## Material properties

**ANODIZED ALUMINUM:** Anodizing is an electrolytic passivation process used to increase the thickness of the natural oxide layer on metal surfaces.

This technique is often applied to aluminum to create an artificial shield layer through the oxide that protects the aluminum, known as alumina. The layer is obtained through electrochemical processes that provide higher resistance and durability of the aluminum.

**COLORS ALUMINUM:** The color is applied to the aluminum profiles using Epoxy paint. This process involves applying powder paint charged with the opposite electrical polarity of the aluminum profile, which attracts the powder to the surface. The coating is then melted and cured in an oven to ensure adhesion.

## Installation method

1. Place and cut the profile to the desired length, considering the space for the corner post.
2. Apply adhesive using a notched trowel on one of the walls. The adjacent wall must already be tiled.
3. Place the profile on the corner, align the drilled "A"-shaped wing hitch and press until the adhesive seeps through the perforations.
4. Place the corner post.
5. Install the adjacent wall profile.
6. Firmly press both profiles into the adhesive at the coating joint, covering the tile edges.
7. Wipe the profile with a damp cloth to prevent glue from drying on the surface.



## Cleaning and maintenance

Clean aluminum profiles periodically using a soft cloth.

The surface must be protected from objects that could scratch it.

If a neutral cleaner is used, it must be diluted with cold water and dried afterward to remove damp traces.

If dampness persists, clean with a 5% solution of neutral soap or detergent in clean water using a lint-free cloth to avoid scratching.

- Steel wool
- Abrasive or remover products, such as strong acids (hydrochloric and perchloric).
- Strong bases (caustic soda or ammonia).
- Carbonated solutions.
- Citric acid.
- Waxes, petroleum jelly, lanolin, or similar.
- Solvents containing haloalkanes (e.g., hydrofluoroethers or chlorinated solvents).
- Setting accelerators that contain chlorides.